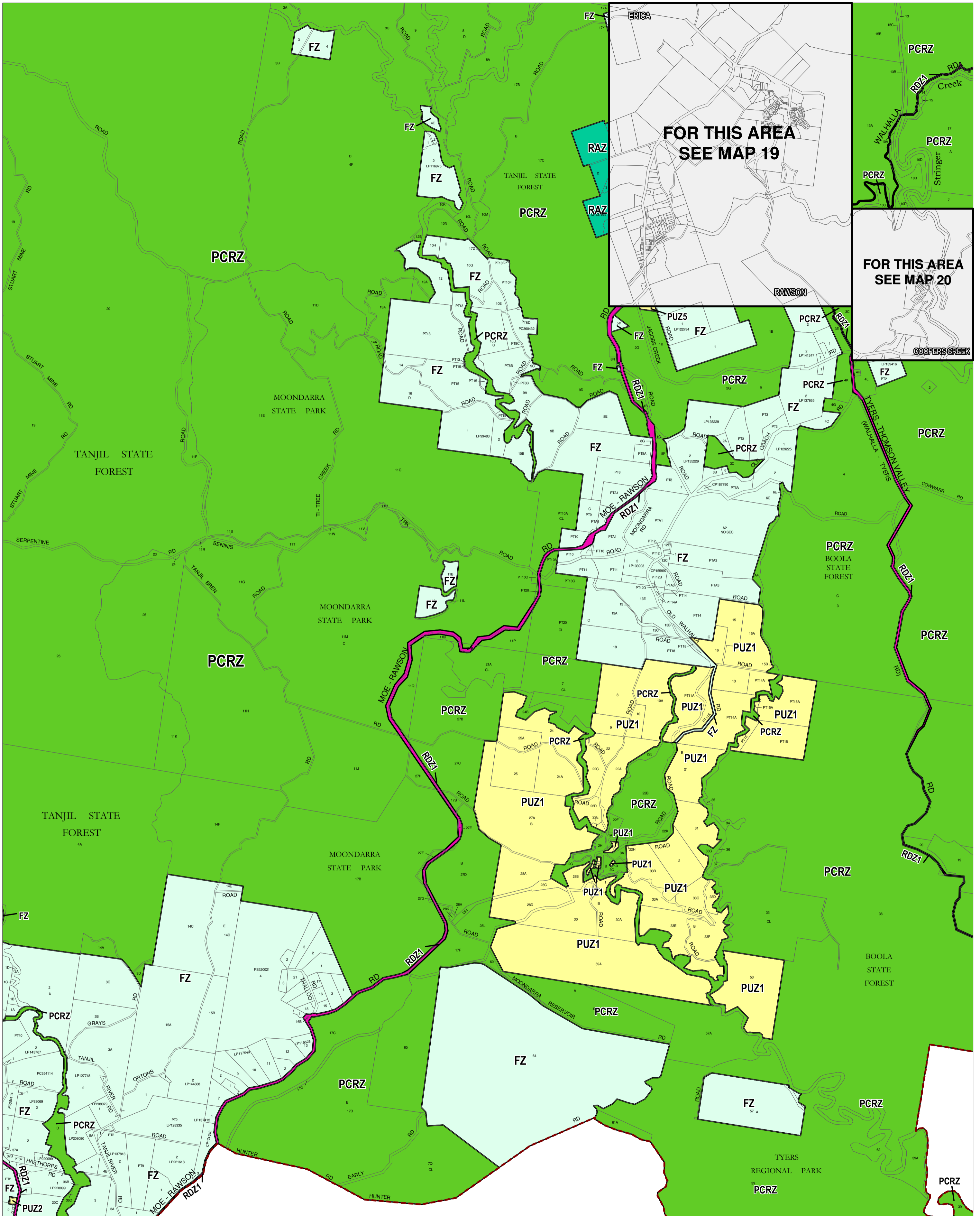
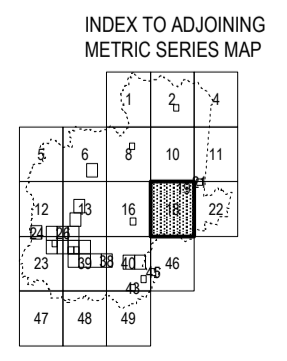
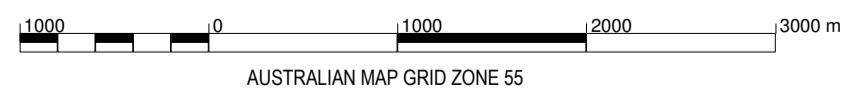


# BAW BAW PLANNING SCHEME - LOCAL PROVISION



This publication is copyright. No part may be reproduced by any process except in accordance with the provisions of the Copyright Act. © State of Victoria. This map should be read in conjunction with additional Planning Overlay Maps (if applicable) as indicated on the INDEX TO MAPS.

Public Land	
<span style="background-color: #90EE90; border: 1px solid black; display: inline-block; width: 10px; height: 10px;"></span>	Public Conservation And Resource Zone
<span style="background-color: #FFFF00; border: 1px solid black; display: inline-block; width: 10px; height: 10px;"></span>	Public Use Zone - Cemetery/Crematorium
<span style="background-color: #FFFF00; border: 1px solid black; display: inline-block; width: 10px; height: 10px;"></span>	Public Use Zone - Education
<span style="background-color: #FFFF00; border: 1px solid black; display: inline-block; width: 10px; height: 10px;"></span>	Public Use Zone - Service And Utility
<span style="background-color: #FFB6C1; border: 1px solid black; display: inline-block; width: 10px; height: 10px;"></span>	Road Zone - Category 1
Rural	
<span style="background-color: #E0F0FF; border: 1px solid black; display: inline-block; width: 10px; height: 10px;"></span>	Farming Zone
<span style="background-color: #ADD8E6; border: 1px solid black; display: inline-block; width: 10px; height: 10px;"></span>	Rural Activity Zone



Printed: 29/4/2013

AMENDMENT C99